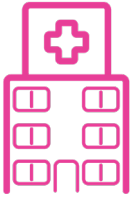


## Healthwatch North Yorkshire's priorities 2022-2023



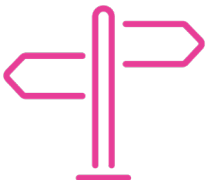
**Work with partners across social care, including care homes, to listen to those people delivering & receiving care to support service improvements.** Including our enter & view programme and exploring the impact of workforce shortages on people and services.



**Listen to and gather the views of younger people to ensure they help to influence the design, delivery & commissioning of services they receive.** Involving, for example younger people, mental health providers and educational colleges.



**Listen to & gather the views & experiences of people to ensure they help to improve the provision & delivery of health & care services.** Prioritising work around NHS dental provision, helping people to receive the right health information for their needs, and ensuring that people have improved access and understanding of continence services.



**Work with key stakeholders & organisations to support & influence improvements in health & care services.** Including working with the newly established Integrated Care Systems in Humber & North Yorkshire and West Yorkshire (includes Craven).

